

EFFECI

241-31

BLIND STITCH
FOR ULTRA THIN



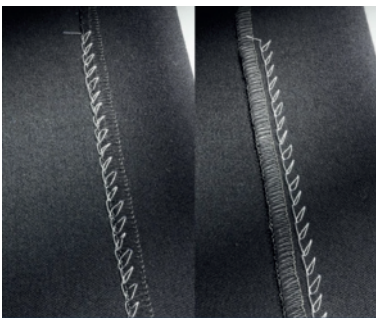
Description

Blind-stitch machine for generic use, 1 thread 1 plunger and skip-stitch 1:1-1:2 device.



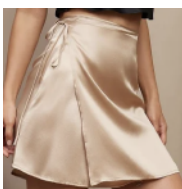
Suitable for ultra thin

The machine is especially suitable for extra thin fabrics such as silk or linen.



Blind stitch

Used for high-end garments, the needle pinches the material without coming out on the opposite side, making the stitch visible only internally.



@fuse_carlo_spa
www.fuse.it
fuse@fuse.it

