

EFFECI

100-2
BLINDSTITCH
CLASSIC TROUSERS

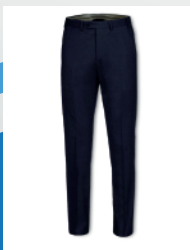
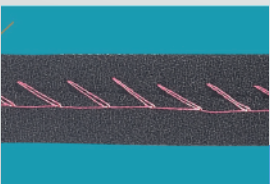


Features



Blind stitch with spring plunger ideal for making classic trouser waistband with thread trimmer and integrated motor.

- 1 Needle
- 1 Thread
- 1 Spring Plunger
- Thread trimmer
- Suitable for classic trousers
- Integrated motor



@fuse_carlo_spa
www.fuse.it
fuse@fuse.it



357-QBD3

BLINDSTITCH

CLASSIC TROUSERS

Spring Plunger

The machine is equipped with a spring plunger that makes it suitable for classic trouser waistband: when it meets a loop it adapts without getting stuck.

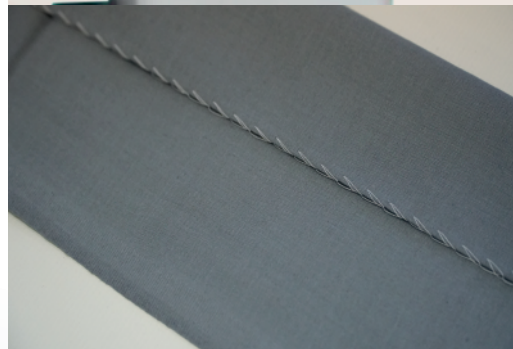
Motor and Trim

The motor is now integrated into the machine and does not require external installations. It makes work quieter, more reliable and reduces power consumption.

In addition the cut of the thread is automatic thanks to the pneumatic thread trimmer.

Blind Stitch

Used for high-end garments, the needle pinches the material without coming out on the opposite side, making the stitch visible only internally, widely used for workmanship such as classic trousers.



Specs

Model	100-2
Destination	Classic trousers
Plungers	1 spring plunger
Speed	3000 rpm
Needle Plate Opening	6mm
Stitch Length	5-8mm