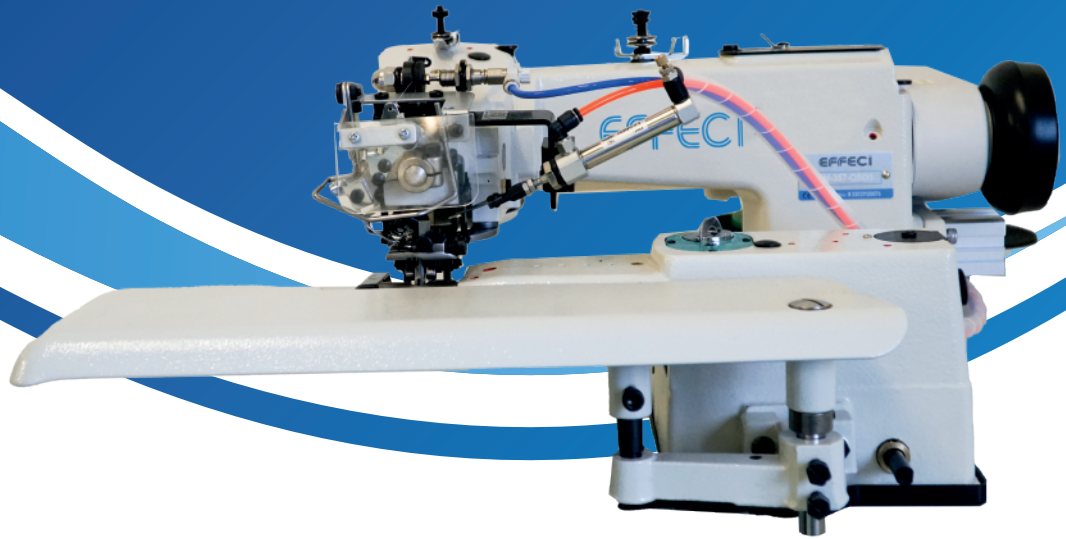


EFFECI

357-QBD3

BLINDSTITCH

CLASSIC TROUSERS

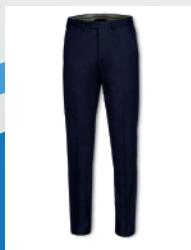
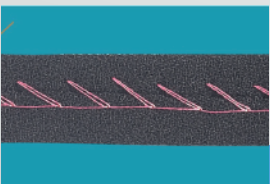


Features



Blind stitch with spring plunger and pneumatic lower foot ideal for making classic trouser belt.

- 1 Needle
- 1 Thread
- 1 Spring Plunger
- Thread trimmer
- Suitable for classic trousers
- Pneumatic lower foot
- Integrated motor



@fuse_carlo_spa
www.fuse.it
fuse@fuse.it



357-QBD3

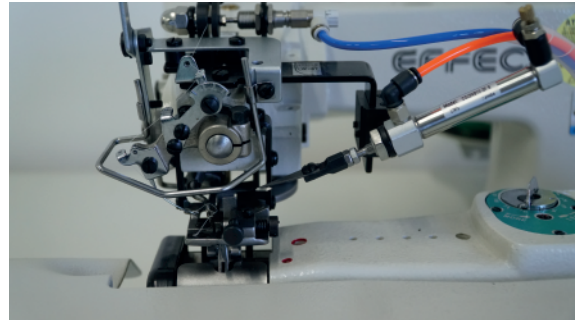
BLINDSTITCH

CLASSIC TROUSERS

Spring Plunger

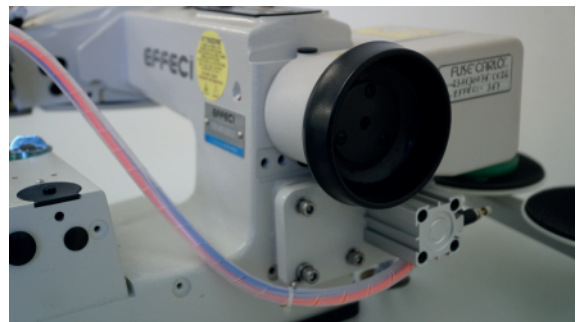
The machine is equipped with a spring plunger that makes it suitable for classic trouser belts: when it meets a loop it adapts without getting stuck.

There is also a thread cutter and the pneumatic lower foot.



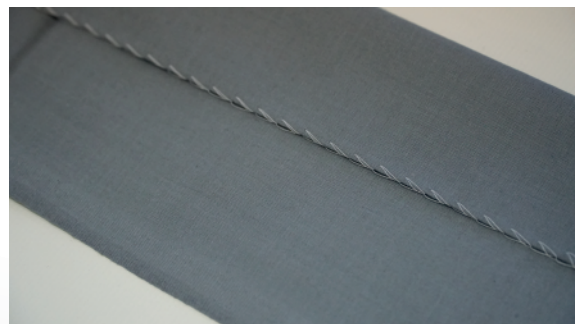
Integrated Motor

The engine is now integrated into the machine and does not require external installations. It makes work quieter, more reliable and reduces power consumption.



Blind Stitch

Used for high-end garments, the needle pinches the material without coming out on the opposite side, making the stitch visible only internally, widely used for workmanship such as classic trousers.



Specs

Model	357-QBD3
Destination	Classic trousers
Plungers	1 spring plunger
Speed	1800 rpm
Needle System	LW x 6T #14
Stitch Length	3,2-8,5