

EFFECI

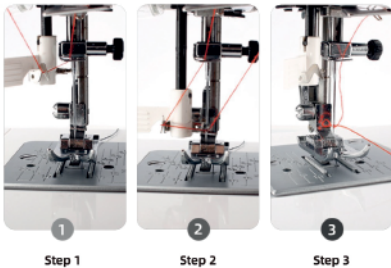
FC 990

MECHANICAL SEWING MACHINE



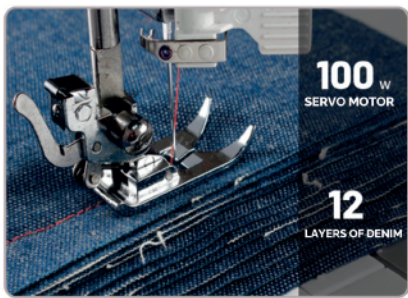
Description

Mechanical free-arm sewing machine, 24 stitches, 4-step buttonhole, automatic needle threader, oscillating hook, stitch length (max 4mm) and zigzag width (max 5mm) adjustment, feed dog embroidery plate, LED light, twin needle spool pin, stitch tableau and speed up to 800rpm.



Automatic Needle Threader

Thanks to this device it's possible to thread the needle automatically in only 3 steps.



Ultra Power Servo Motor

100W servo motor that can sew up to 12 layers of denim!

Features

- Automatic needle threader
- Oscillating hook
- Feed dog embroidery plate
- Two steps presser foot lifter (fino 5mm)
- Twin needle spool pin
- Soft cover
- Carry handle



@fuse_carlo_spa
www.fuse.it
fuse@fuse.it

